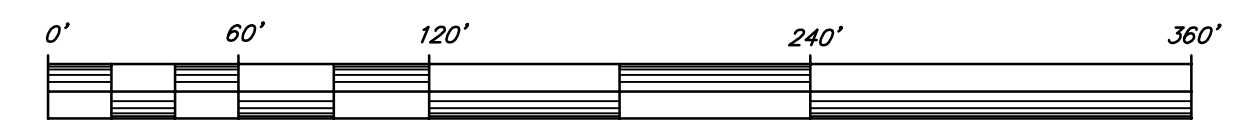


Legend

	Power pole
	Survey Control Point
	Existing hydrant
	Drainage flow
	Sign
	Light post
	Existing spot elevation
	Approx. Property Line
	Existing Water Line/gate valve
	Existing Gas Line
	Existing tree line
	Existing Sewer Line/manhole
	Existing electrical/telephone
	Existing Storm Line/catch basin
	Existing Contour

N/F
VILLAGE OF ESSEX JUNCTION
32 ± ACRES

SCOTT + PARTNERS
ARCHITECTS
20 main street essex junction vermont 05452
p. 802.879.5153 f. 802.872.2764
architecture
planning
interiors



BAR SCALE 1" = 60'

General Notes:

- The information represented on plan was a result of a topographical survey by Krebs & Lansing Consulting Engineers Inc. The vertical datum and horizontal coordinates used on the project were assumed.
- The location of underground utilities is not warranted to be exact or complete. Contact Dig Safe prior to any excavation.
- Digital aerial photography and digital elevation models are produced by the Vermont Mapping Program.

Bike Path Legend:

S1= SITTING AREA
S2= SITTING AREA
P1= BEGINNER PUMP TRACK
P2= INTERMEDIATE/ADVANCED PUMP TRACK
L1= BEGINNER JUMP LINE (NO GAPS)
L2= BEGINNER/INTERMEDIATE JUMP LINE (NO GAPS)
L3= INTERMEDIATE JUMP LINE (GAPS) (RYTHM LINE)
L4= INTERMEDIATE/ADVANCED JUMP LINE (GAPS) (RYTHM + HIPS)
L5= PRO LINE (BIG GAPS, HIPS, BERMS)
T1= EXISTING TRIAL - KEEP
T2= EXISTING TRIAL - KEEP
T3= EXISTING TRIAL - KEEP-RETURN
T4= EXISTING TRIAL - REMOVE
T5= EXISTING TRIAL - KEEP

Date revised	Description	Checked	Date

Design	MJR	<h2>Overall Plan</h2> <h1>Maple Street Park & Pool</h1>
Drawn	JAR	
Checked	MJR	
Scale	1" = 60'	
Date	Jan. 12, 2010	

Project	09999	Maple Street	Essex, Vermont
KREBS & LANSING Consulting Engineers, Inc. 164 Main Street, Colchester, Vermont 05446			1